

Electrovert® OmniMax & OmniES™ Reflow Soldering and Curing System



The OmniES/Max series ovens are designed to deliver maximum thermal performance combined with process capability and control. The OmniES/Max product portfolio offers the most advanced technology in the industry.

IsoThermal™ Chamber Technology

The OmniES and OmniMax reflow systems series are designed to deliver maximum thermal performance combined with process capability and control. The heartbeat of the OmniES/Max series — Electrovert's patented IsoThermal Chamber Technology (ICT). IsoThermal Chamber Technology innovative design consists of dual compression boxes, independent blower speed control, super efficient heating elements, and utilizes a low-turbulent convection delivery type diffusers. The result: super-efficient thermal performance throughout the entire process.

OmniES 5, 7, 10, and 13 Zone Reflow Soldering and Curing

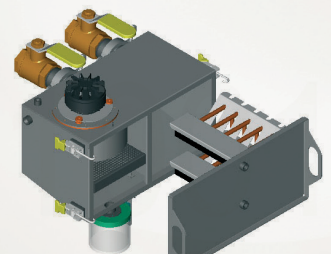
The OmniES offers a combination of innovation and industry-proven technologies in an easy-to-use, reliable oven for reflow soldering and curing applications. The OmniES includes independent blower control as standard. The OmniES series are available in hybrid or full convection models (full convection is field upgradeable). Through energy saving designs, the OmniES models are ideal for the majority of reflow applications. The OmniES delivers excellent thermal performance at the lowest cost of ownership.

OmniMax 7, 10, and 13 Zone Reflow Soldering

The OmniMax offers precision IsoThermal convection for demanding thermal profile requirements and is ideal for applications that require precise control of convection dynamics within each zone. The OmniMax has independent speed and temperature control between top and bottom within each individual zone as standard.

Innovative Cooling Technology

- Air flow dynamics within cooling zones are efficiently controlled for a balanced environment and reduced exhaust temperatures
- An industry first with dripless cooling significantly reduces the potential for flux dripping in the cooling area
- Excellent separation between the heating and cooling areas produces tight control of TAL
- Enhanced nitrogen cooling design achieves maximum airflow balance and reduces nitrogen consumption by 20 to 25%



WORLD HEADQUARTERS

16 Forge Park Drive,
Franklin, MA 02038, USA
Tel: +1 (508) 520-0083
Fax: +1 (508) 520-2288

www.speedlinetech.com

MANUFACTURING AND CUSTOMER SUPPORT FACILITIES

ACCEL & ELECTROVERT

1629 Old South 5,
Camdenton, MO 65020, USA
Tel: +1 (573) 346-3341
Fax: +1 (573) 346-5554

CAMALOT & MPM

ITW Electronics (Suzhou) Co. Ltd.
No. 5 Xiang Street, Tai Shan Road,
Suzhou New District, Jiang Su,
P.R. China 215129
Tel: +86 (512) 6841-3378
Fax: +86 (512) 6831-23750

SALES AND CUSTOMER SUPPORT OFFICES U.S.A.

16 Forge Park Drive,
Franklin, MA 02038, USA
Tel: +1 (508) 520-0083
Fax: +1 (508) 520-2288
info@speedlinetech.com

MEXICO

Carretera Base Aerea #5850 Km. 5,
Edificio No. 21
Zapopan, Jalisco, Mexico 45136
Tel: +52 (33) 33 65 6511
Fax: +52 (33) 38 18 9019

EUROPEAN OFFICE

Im Gefierth 14
D-63303 Dreieich, Germany
Tel: +49 (0) 6103-8320
Fax: +49 (0) 6103-832-299

ASIA/PACIFIC

61 Ubi Avenue 1, #06-01 UB Point
Singapore 408941
Tel: +65-6286 6635
Fax: +65-6593 0175
SLmarketing@itweae.com

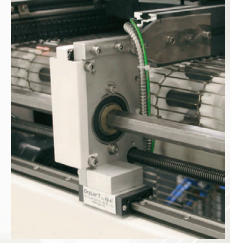
© 2016 ITW all rights reserved.

OmniMax, OmniEs, IsoThermal Chamber Technology, Intelligent Flux Control, OmniCheck, Speedline, Electrovert, Accel, Camalot and MPM are trademarks of ITW EAE or its affiliates and subsidiaries. Windows is a registered trademark of Microsoft Corporation.

06/16

Maintenance Reduction Technologies

- Patented dripless cooling design extends maintenance in the cooling section and easy to clean
- Intelligent Flux Control (IFC) advanced flux management system that incorporates self-clean features and allows for full maintenance during production
- Full accessibility to all major assemblies is accomplished through removable panels (front and back)



Versatile Conveyor System

- The versatile conveyor system is capable of process widths up to 36" (914 mm)
- Linear guides and precision screw shafts ensure a smooth motion and highly repeatable conveyor width
- Robust conveyor design that is focused on minimizing vibration
- Center Board Support (CBS) option
- Dual Lane solutions are compatible with all major pick-and-place suppliers



High-End Features

- User-friendly Windows®-based user interface with expanded data logging capabilities
- Common PC and I/O system with wave and cleaner products
- Independent closed-loop blower control (heating and cooling)
- OmniCheck™ continuous monitoring and verification feature
- Comprehensive list of features that support demanding production requirements.



Specifications	OmniES/Max Series Reflow and Curing			
	5 Zone	7 Zone	10 Zone	13 Zone
OmniES	✓	✓	✓	✓
OmniMax	—	✓	✓	✓
OmniES Convection Type	Hybrid and Full			
OmniMax Convection Type	—	Precision		
Standard Process Width	508 mm (20")	457 mm (18")	508 mm (20")	
Machine Length	3421 mm (134.7")	4863 mm (191.5")	6439 mm (253.5")	
Machine Width	1367 mm (53.8")			
Machine Height	1241 mm (48.9")			
Heated Length	1921 mm (75.6")	2685 mm (105.7")	3855 mm (151.8")	
Cooling Length	481 mm (18.9")	887 mm (34.9")	1293 mm (50.9")	
Reflow Operating Temperature	350°C (662°F)			
Curing Operating Temperature	As low as 60°C (140°F)			
UL Certified and Listed for Factory Automation	Standard			
CE Listed	Optional			
Country of Origin	Made in USA			

ABOUT SPEEDLINE

Speedline is a member of ITW EAE, a division of Illinois Tools Works, Inc. (NYSE: ITW). They are the global leader in process knowledge, services and manufacturing of capital equipment used in the printed circuit board assembly and semiconductor industries. Speedline markets best-in-class brands including: CAMALOT dispensing systems; ELECTROVERT wave soldering, reflow soldering and curing, and cleaning equipment; and MPM stencil printing systems. For more information visit www.itweae.com.



Electronic Assembly Equipment **ITW**